

# Category 6 UTP Patch Panel

Category 6 Unshielded Twisted Pair Patch Panel



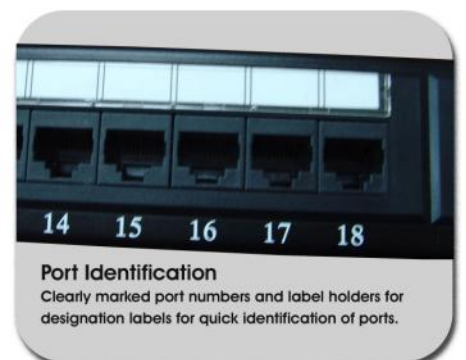
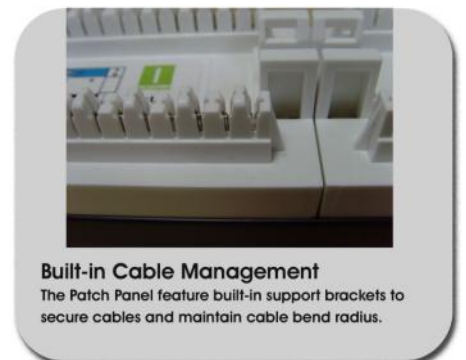
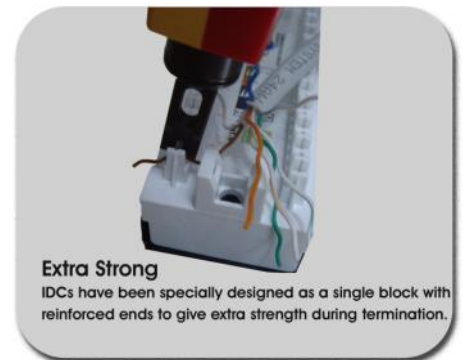
The Category 6 Patch Panels from Infinique provides higher bandwidth to transmit data in excess of 250MHz, and are well suited for data centers and storage area networks (SANs). These panels utilize a rugged construction and superior designed IDC with reinforced ends for installer friendly termination. The IDC is color coded to support both T568A and T568B Universal Wiring Schemes.

Combined with our other Copper Systems products, these are a perfect choice for your voice and data communication needs. These superior performance Patch Panels are available in 24 and 48 Ports.

## PRODUCT FEATURES

- Category 6 UTP Patch Panel
- Superior Design Protected PCB
- 110 IDC towers with built-in blades to assist pair splitting
- In-built Slots for Cable Ties
- Easy Clip-on Rear Cable Management Bar for strain relief
- Clear Plastic Label Holders for efficient circuit identification
- Backwards Compatible
- Color coding for T568A and T568B standards
- Accepts 22-26 AWG solid wire
- RoHS Compliant

**Infinique's Category 6 UTP Patch Panels are specially designed with a single block IDC made of UL94V-0 material for extra strength.**



# Category 6 UTP Patch Panel

## Category 6 Unshielded Twisted Pair Patch Panel

### ELECTRICAL SPECIFICATIONS

|                       |                            |
|-----------------------|----------------------------|
| Current Rating        | 1.5Amp max                 |
| Voltage Rating        | 150V                       |
| Contact Resistance    | 20 mOhm                    |
| Insulation Resistance | 500 mOhm                   |
| Dielectric Strength   | 1000 V, AC RMS, 60 Hz/1min |

### MATERIAL SPECIFICATIONS

|                      |   |
|----------------------|---|
| Modular Connector    | 750 Mating Cycles   |
| Durability           | FCC part 68, subpart F and IEC-60603-7 Compliant              |
| RJ45 8-Pin Connector | Phosphor Bronze with 50µ" Gold over 100µ" Nickel Undercoat    |
| Spring Wire          | Standard Material Glass Filled Polyester UL94V.O              |
| Housing              |   |
| IDC Connector        |   |
| Terminations         | Terminates 22~26 AWG (0.64~0.41 mm)                           |
| Insulation Diameter  | 0.70~1.40 mm  |
| IDC Block            | 200 Termination Cycles  |
| IDC Contact          | Phosphor Bronze with 200µ" Silver over 100µ" Nickel undercoat |
| IDC Body             | UL 94V.O Fire-Retardant Plastic                               |
| Metal Frame          | SPCC Powder Coated Steel                                      |

### MOUNTING DIMENSIONS

Width: 19" rack mountable panel  
Depth: 1.5" deep without cable management bar, 6.0" deep with cable management bar  
Height: 24 Ports Panel: 1.75" (1U), 48 Ports Panel: 3.50" (2U)

### STANDARDS/COMPLIANCE

ANSI/TIA/EIA-568-B.2-1 Category 6 requirements  
TIA/EIA TSB-40 requirements  
ISO/IEC Generic Cabling Standard 11801:2002 ed.2.0  
CENELEC Generic Cabling Standard EN50173 – 1:2002  
Compliant with UL1863  
RoHS compliant

### TYPICAL APPLICATIONS

100BASE-TX Fast Ethernet  
Token Ring  
1000BASE-T Gigabit Ethernet  
155 Mbps ATM  
Composite Video  
622 Mbps ATM

### ORDERING INFORMATION

| Part Number | Description                             |
|-------------|---|
| INPP624     | Category 6 UTP 24 Ports Patch Panel, 1U |
| INPP648     | Category 6 UTP 48 Ports Patch Panel, 2U |

Delivery: 1 24 Port Category 6 Patch Panel, Easy Clip-on Rear Cable Management Bar, Universal Wiring Insert, Clear Plastic Label Holders, Label Kit, Cable Ties, Velcro Tie, Cage Nut and Screws.

Infinique's Extended Product Warranty provides a 25-year product and applications assurance of compliance with the industry performance standards appropriate to the class of cabling installed. This is a link performance warranty, covering patch panel to outlet and may be applied for by an Authorized Infinique's Channel Partner who has designed, supplied and installed the system.



Infinique, a Canadian company is a manufacturer of high performing end-to-end solutions in copper, fiber and video surveillance systems. For more information visit our website at [www.infinique.com](http://www.infinique.com) or email us at [sales@infinique.com](mailto:sales@infinique.com).

[www.infinique.com](http://www.infinique.com)

Product specification, design and availability subject to change without prior notice.

Infinique Copper Systems

TEC-CS-212-1601-V02